

# Two Rivers Watershed District

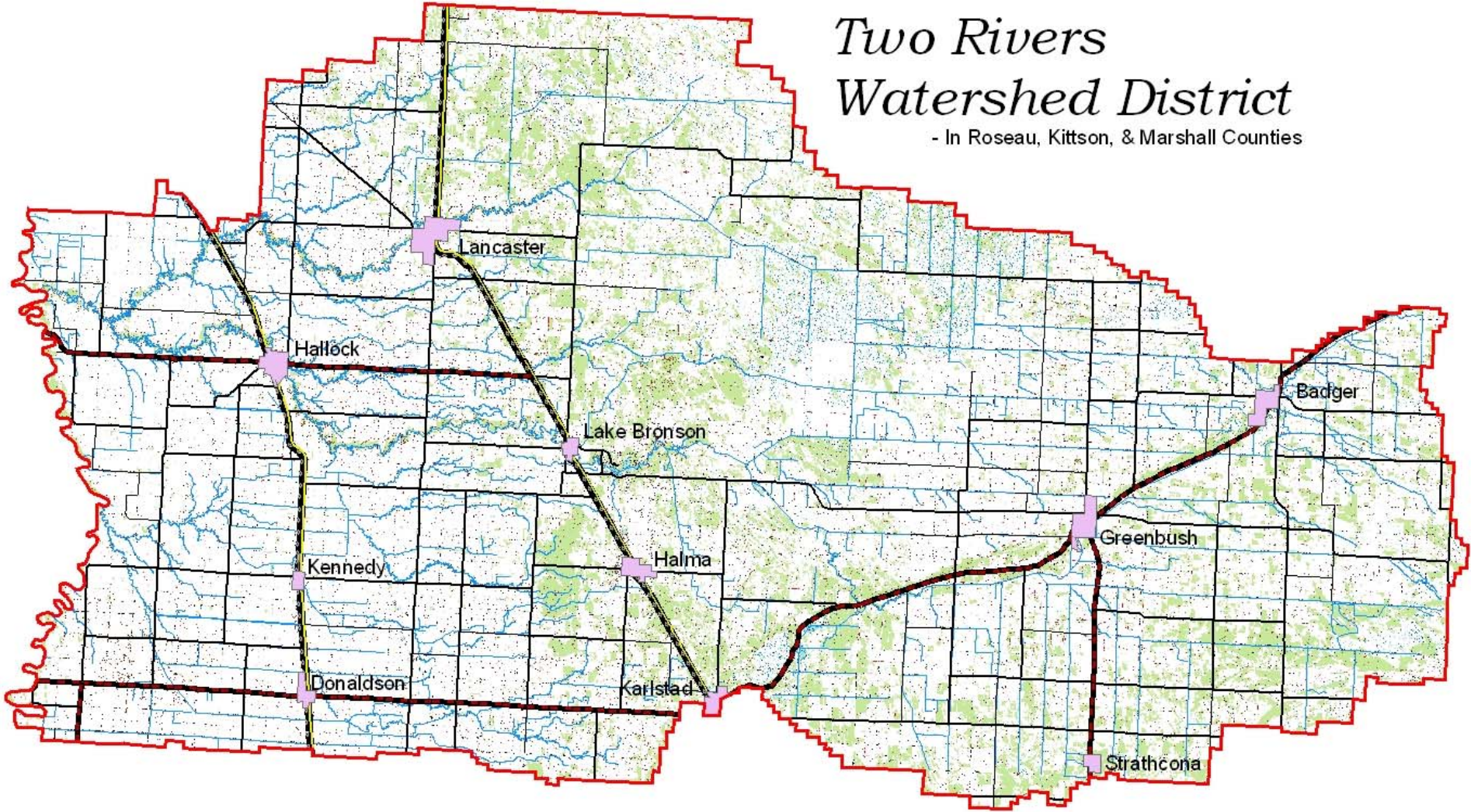
56 + Years of Water  
Management

Association of Townships

March 9, 2015

# *Two Rivers Watershed District*

- In Roseau, Kittson, & Marshall Counties



# Two Rivers Watershed District Quick Facts

- Established October 1957, the 2<sup>nd</sup> WD in the State of MN – purpose drainage / flood control
- 7 Member Board of Managers; Employs 2 staff people
- Comprises 1,462 square miles in parts of Roseau, Kittson, & Marshall Counties
- Borders ND, Canada, & 3 other Watershed Districts
- Approximately 500 feet of fall from east to west

# 50 Year Timeline

- 1950's – District Organized - Overall Plan, By-Laws
- 1960's – Middle Branch & North Branch Projects
- 1970's – Soler #4, Dewey #5 Ditches
- 1980's – Nereson Impoundment, Developed *Rules*
- 1990's – Hired 1<sup>st</sup> employee, Monitoring Initiatives
  - ❖ Water Quality, Culvert Inventory, Streamflow, Snow Survey
  - ❖ Information & Education
- 2000's – Ross Impoundment, Kennedy #6, Springbrook projects; Expanded Staff to 2 people
- The Future – Quick Impoundment, Klondike Clean Water Retention Project #11, other projects

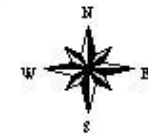
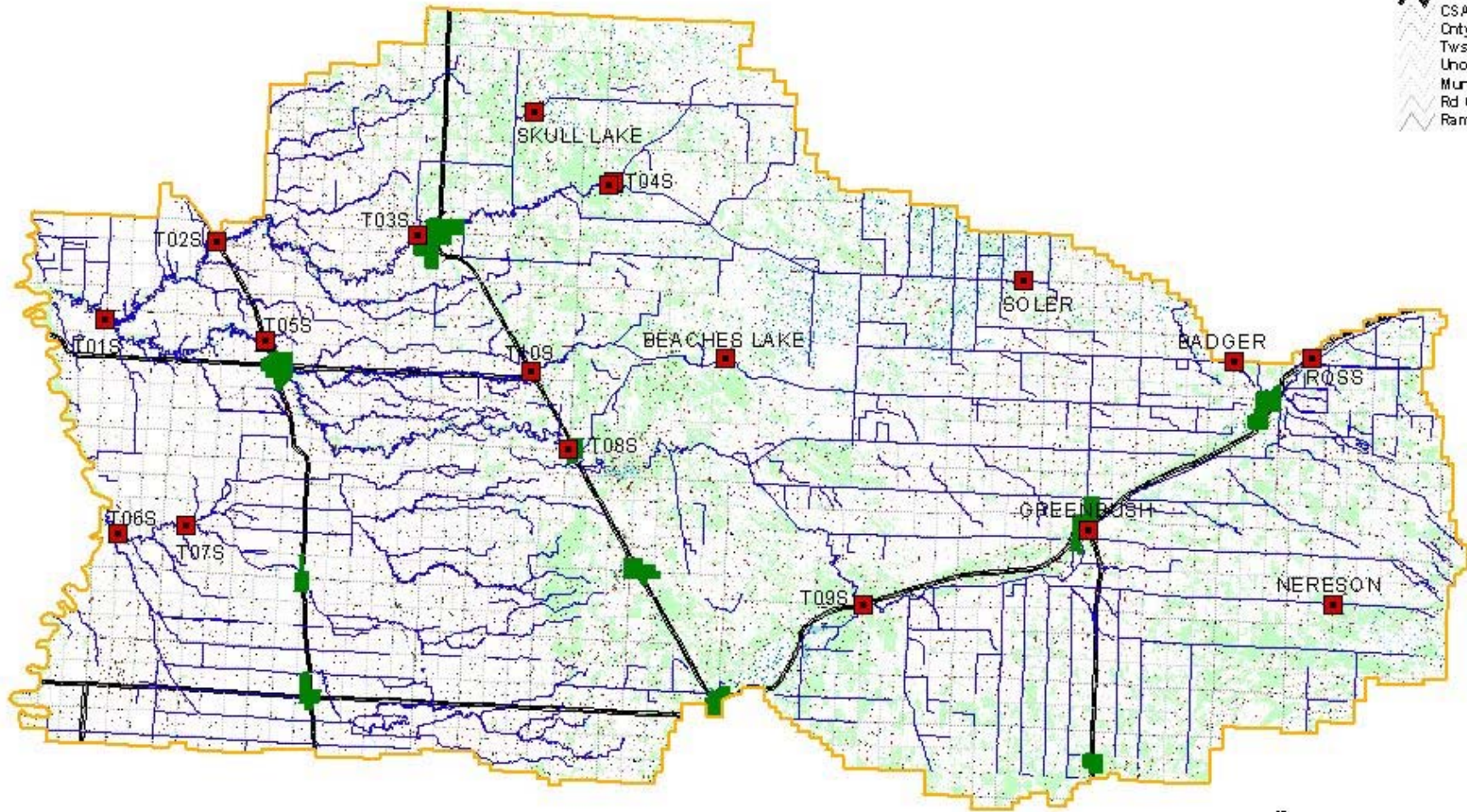
# Monitoring & Data Collection Activities

- Water Quality
- Stream Flow
- Snow Survey
- Culvert Inventory
- Permitting
- Education Programs
- Other .....

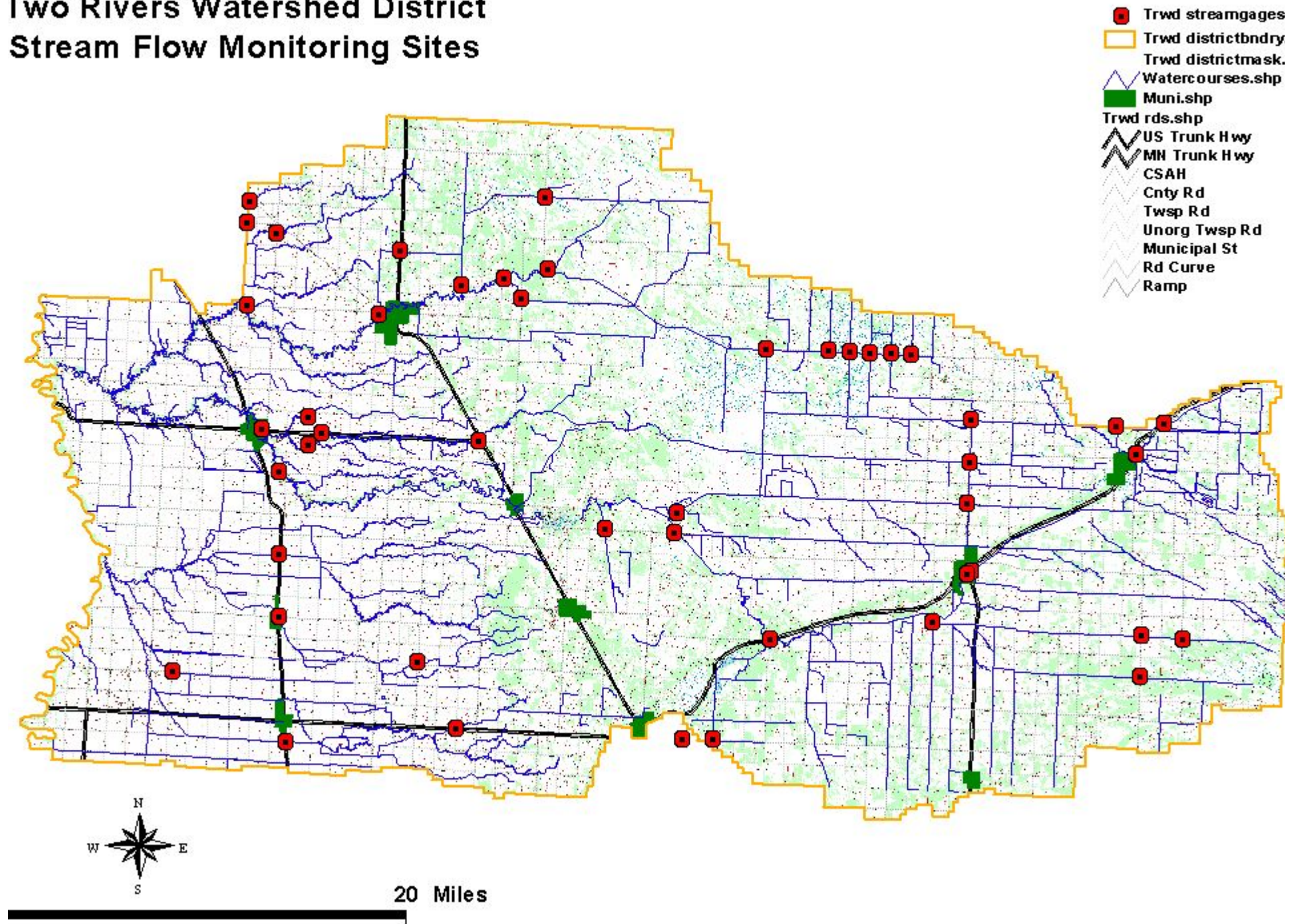


# Two Rivers Watershed District Water Quality Monitoring Sites

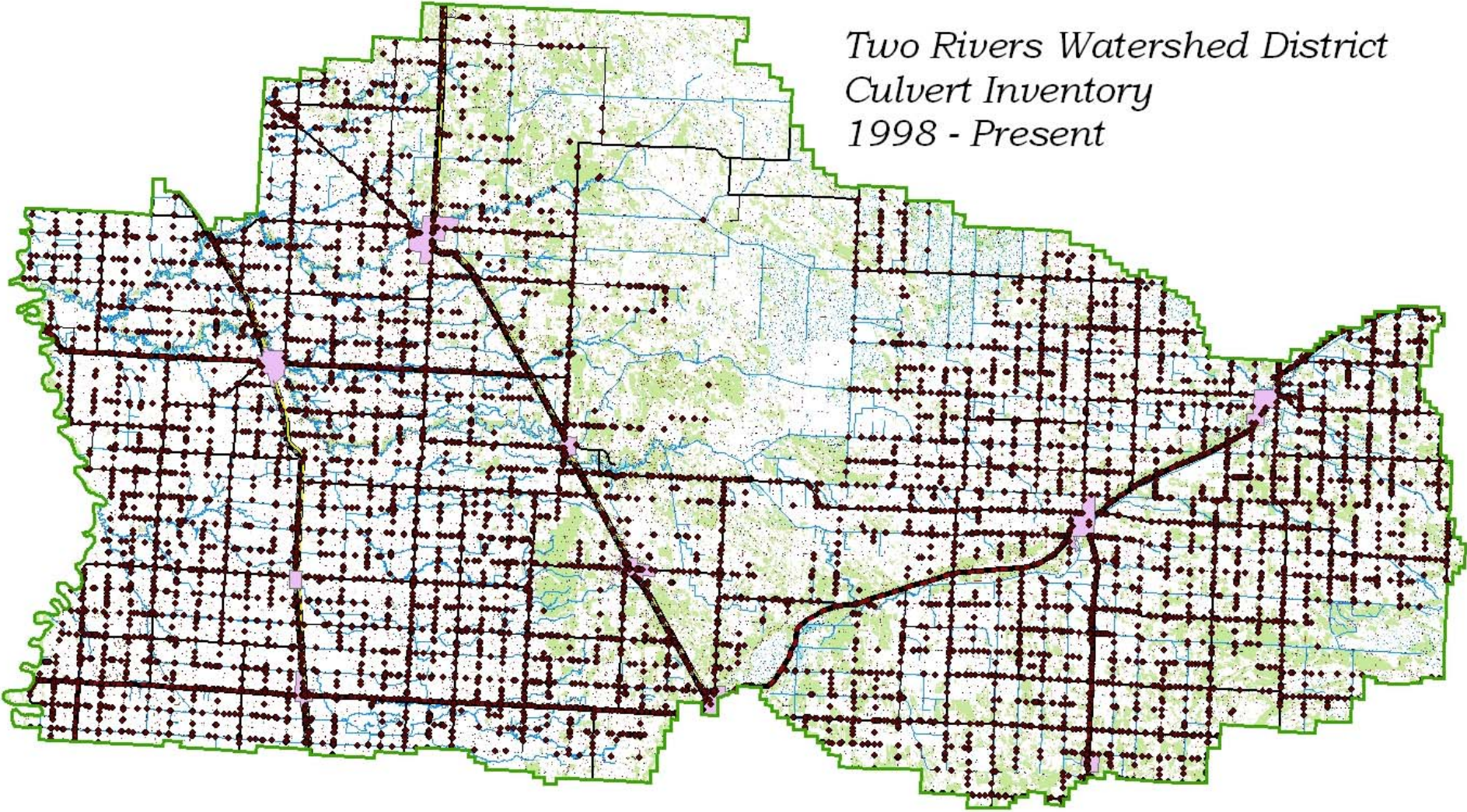
- Trwd waterquality.
- Trwd districtbdry
- Trwd districtmask.
- Muni shp
- Watercourses shp
- Trwd rds.shp
- US Trunk Hwy
- MN Trunk Hwy
- CSAH
- Cnty Rd
- Twsp Rd
- Uhorg Twsp Rd
- Municipal St
- Rd Curve
- Ramp



# Two Rivers Watershed District Stream Flow Monitoring Sites



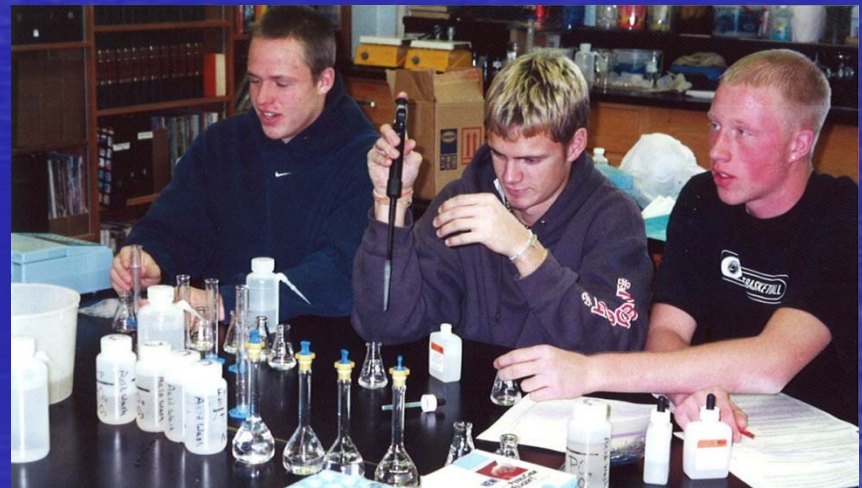
*Two Rivers Watershed District  
Culvert Inventory  
1998 - Present*





# Information & Education Activities

- Envirothon
- River Watch
- Quarterly Newsletters
- Flood Reporting
- News Releases



# Two Rivers WD Projects

- Ring Dikes
- Impoundments
- Ditches
- Other

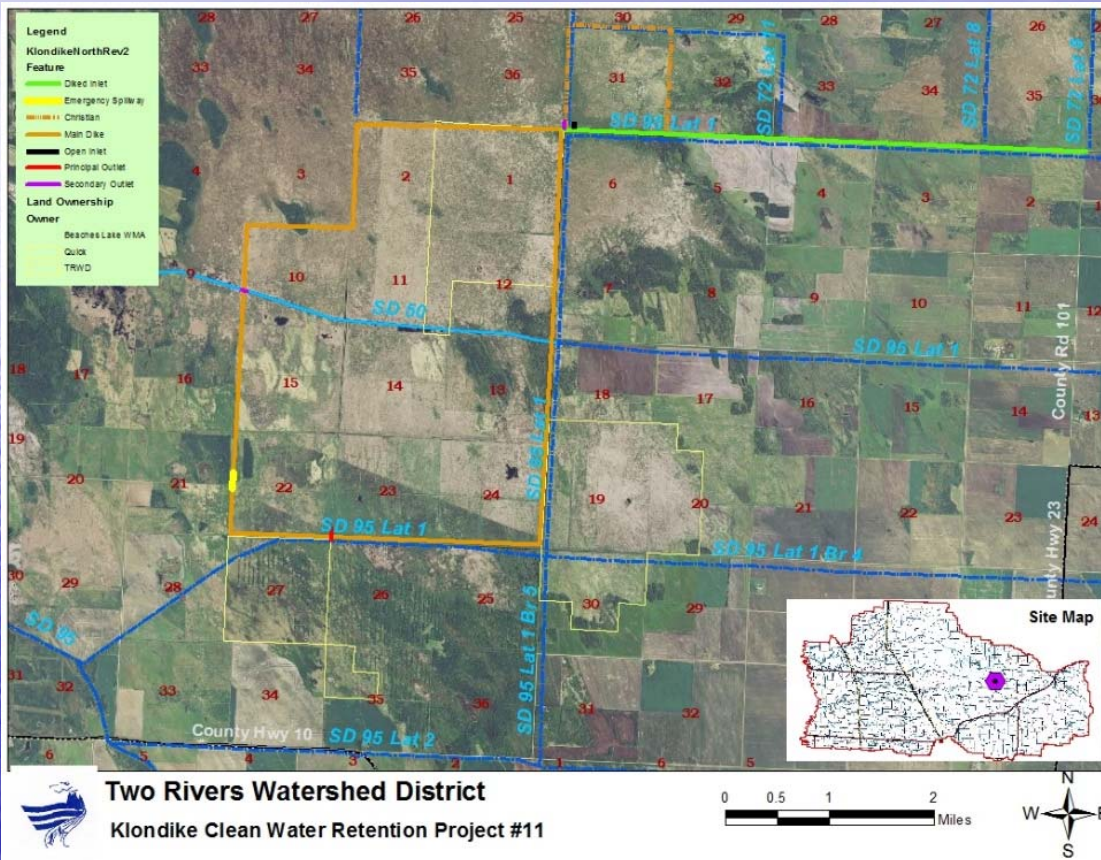
# Impoundments



- Nereson, Ross #7, Skull Lake, Quick, KCWRP #11
- 9,241 acre feet of storage existing
- 35,500 acre feet proposed

# Klondike Clean Water Retention Project #11

- Footprint = 12 sq mi = 30,500 ac ft storage
- 17 miles dike, 1 inlet & 3 outlets
- Will control 4" of runoff from 143 sq mi
- Provides adequate outlet for SD #95
- Provides flood storage for Red River
- Provides habitat and water quality benefits



# Jurisdiction of Ditches

Approximately 92 miles

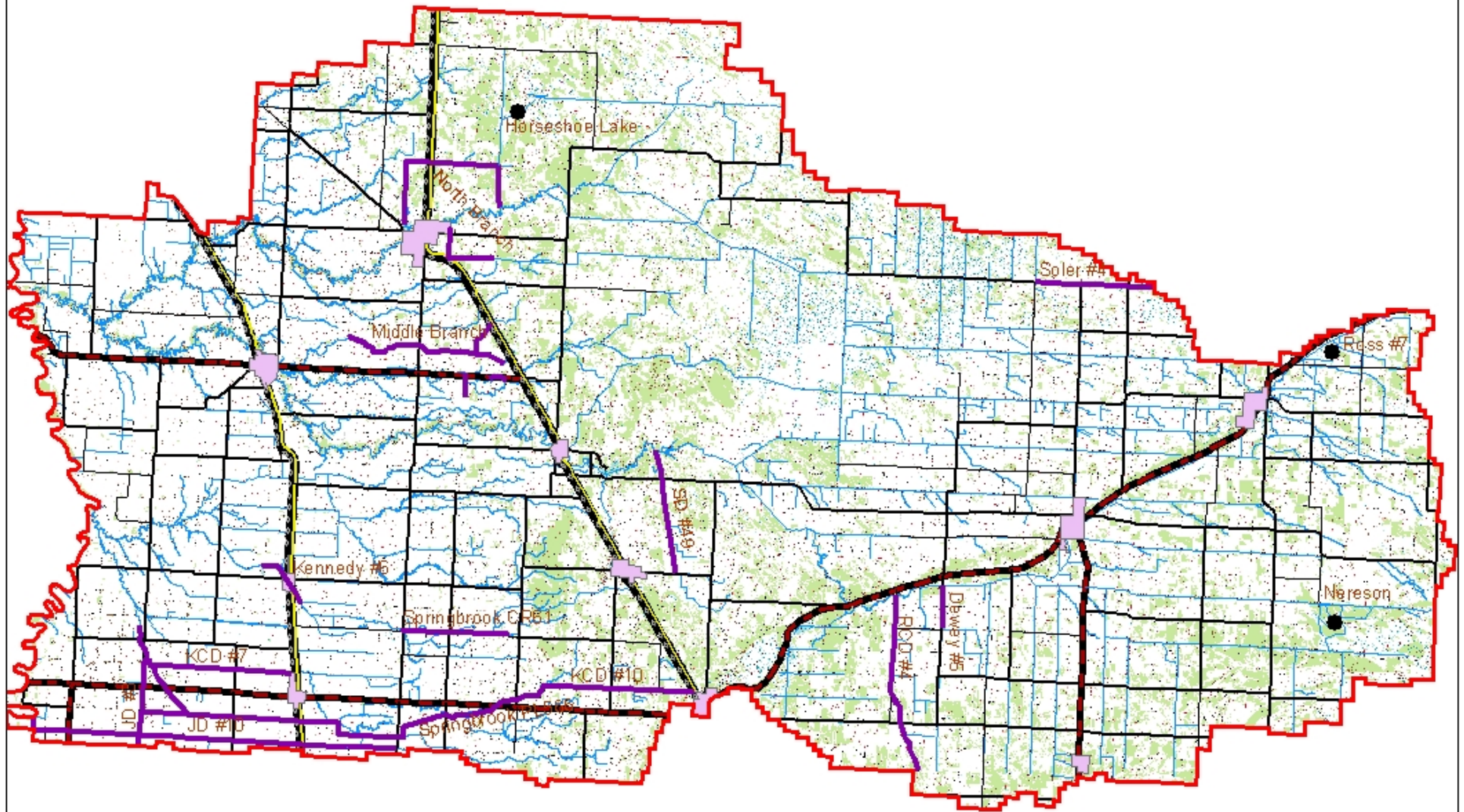


- Middle Branch
- North Branch
- Soler #4
- Roseau CD #4
- Dewey #5 Improvement
- Kittson CD #7
- Kittson CD #10
- Judicial Ditch #3
- Judicial Ditch #10
- State Ditch #49
- SD #85 Improvement

# Two River Watershed District Ditch & Flood Control Projects



-  trwd district bndry
-  TRWD
-  muni



0 2.5 5 10 15 20 Miles

# Recent Construction Projects

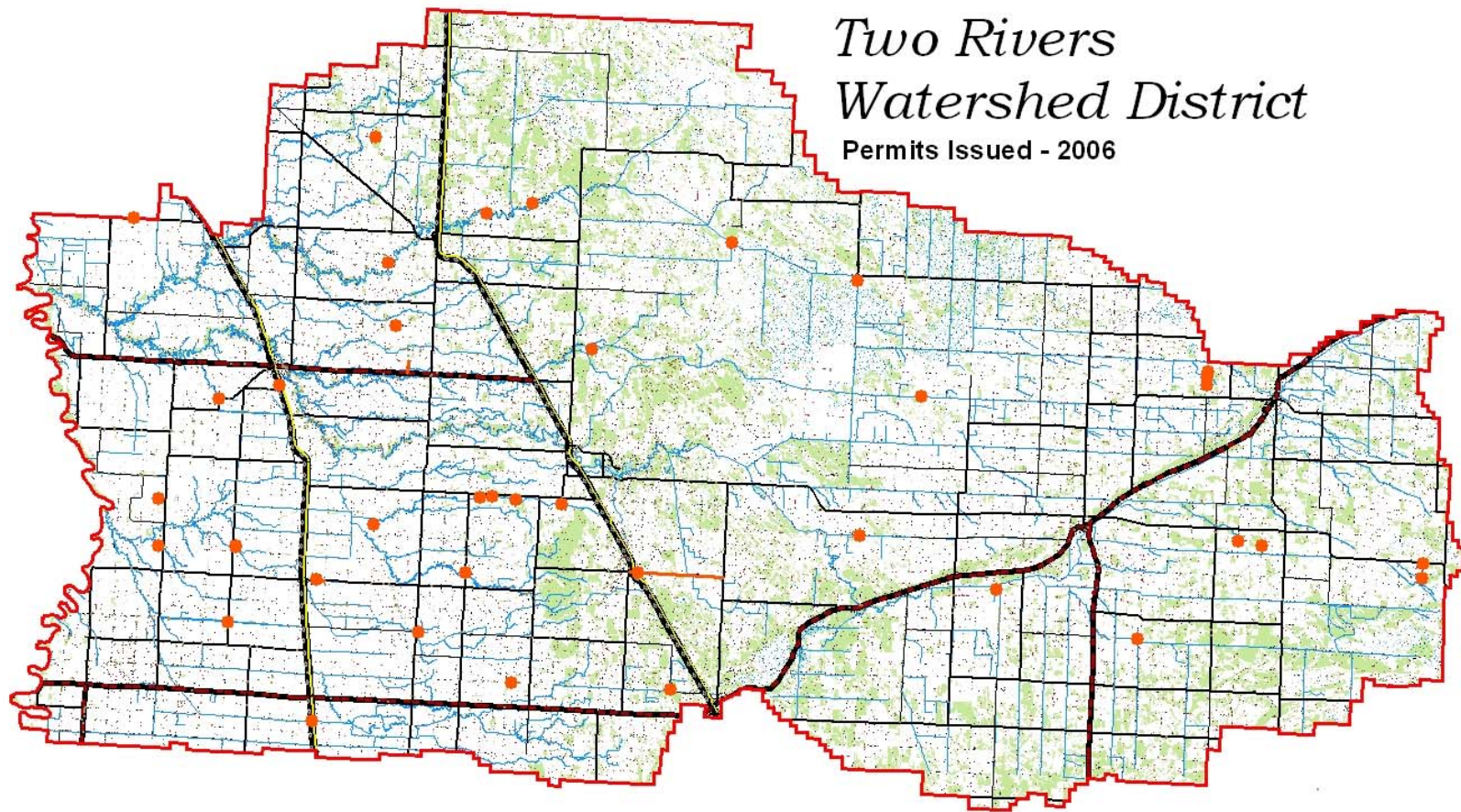
- Kennedy #6
- Judicial Ditch #10 Repair
- Ross #7
- Springbrook – PL566







# Permitting



# Priorities For 2015 & Beyond

- Klondike Clean Water Retention Prj #11
- Quick Impoundment
- Water Quality – WRAPS
- Drainage Ditch Maintenance
- Continue Monitoring and Data Collection
- Update Overall Plan

# Questions – Comments?

Dan Money

Two Rivers Watershed District

410 5<sup>th</sup> Street S., Suite 112

Hallock, MN 56728

218-843-3333

[Daniel.money@mn.nacdnet.net](mailto:Daniel.money@mn.nacdnet.net)